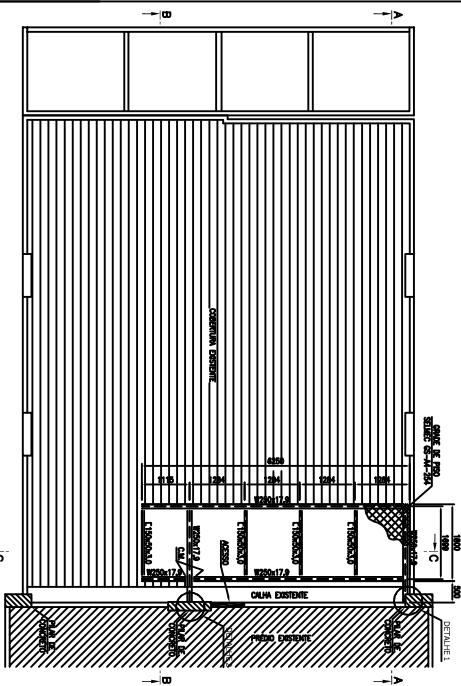
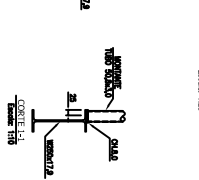
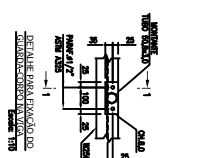
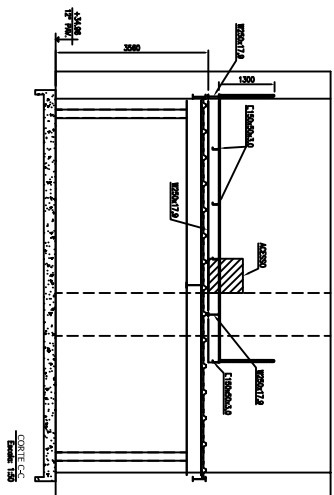
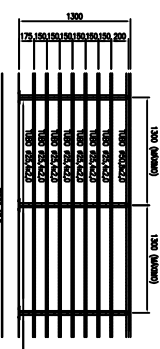
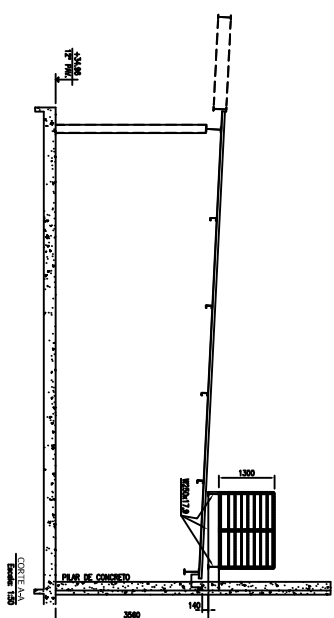
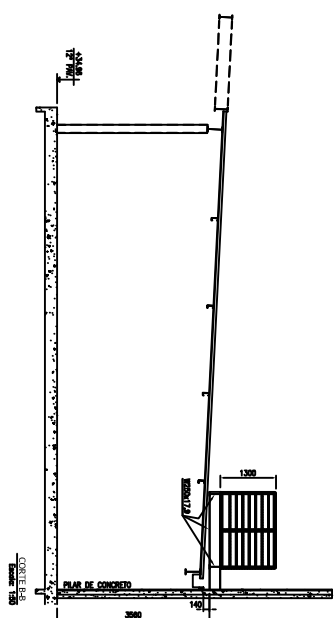
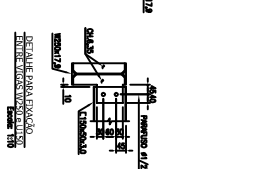
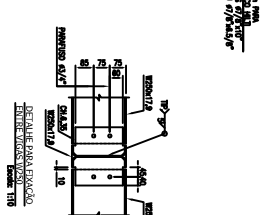
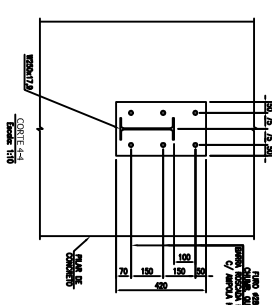
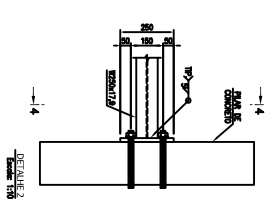
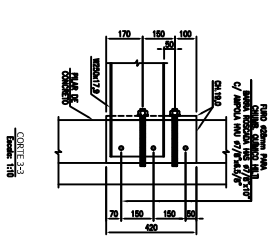
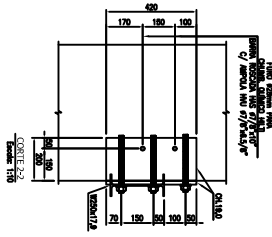
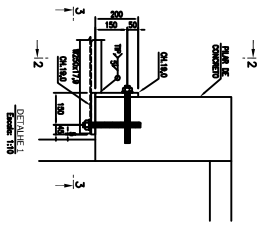
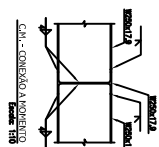


I/1		ESPRESSURA		DMS PENAS	
1	1.10	1.00			
2	1.15	1.00			
3	1.15	1.00			
4	1.15	1.00			
5	1.15	1.00			
6	1.15	1.00			
7	1.15	1.00			
8	1.15	1.00			
9	1.15	1.00			
10	1.15	1.00			
11	1.15	1.00			
12	1.15	1.00			
13	1.15	1.00			
14	1.15	1.00			
15	1.15	1.00			
16	1.15	1.00			
17	1.15	1.00			
18	1.15	1.00			
19	1.15	1.00			
20	1.15	1.00			
21	1.15	1.00			
22	1.15	1.00			
23	1.15	1.00			
24	1.15	1.00			
25	1.15	1.00			
26	1.15	1.00			
27	1.15	1.00			
28	1.15	1.00			
29	1.15	1.00			
30	1.15	1.00			
31	1.15	1.00			
32	1.15	1.00			
33	1.15	1.00			
34	1.15	1.00			
35	1.15	1.00			
36	1.15	1.00			
37	1.15	1.00			
38	1.15	1.00			
39	1.15	1.00			
40	1.15	1.00			
41	1.15	1.00			
42	1.15	1.00			
43	1.15	1.00			
44	1.15	1.00			
45	1.15	1.00			
46	1.15	1.00			
47	1.15	1.00			
48	1.15	1.00			
49	1.15	1.00			
50	1.15	1.00			
51	1.15	1.00			
52	1.15	1.00			
53	1.15	1.00			
54	1.15	1.00			
55	1.15	1.00			
56	1.15	1.00			
57	1.15	1.00			
58	1.15	1.00			
59	1.15	1.00			
60	1.15	1.00			
61	1.15	1.00			
62	1.15	1.00			
63	1.15	1.00			
64	1.15	1.00			
65	1.15	1.00			
66	1.15	1.00			
67	1.15	1.00			
68	1.15	1.00			
69	1.15	1.00			
70	1.15	1.00			
71	1.15	1.00			
72	1.15	1.00			
73	1.15	1.00			
74	1.15	1.00			
75	1.15	1.00			
76	1.15	1.00			
77	1.15	1.00			
78	1.15	1.00			
79	1.15	1.00			
80	1.15	1.00			
81	1.15	1.00			
82	1.15	1.00			
83	1.15	1.00			
84	1.15	1.00			
85	1.15	1.00			
86	1.15	1.00			
87	1.15	1.00			
88	1.15	1.00			
89	1.15	1.00			
90	1.15	1.00			
91	1.15	1.00			
92	1.15	1.00			
93	1.15	1.00			
94	1.15	1.00			
95	1.15	1.00			
96	1.15	1.00			
97	1.15	1.00			
98	1.15	1.00			
99	1.15	1.00			
100	1.15	1.00			



LEGENDA:  
C.M. - CONDIÇÃO A NOBILITAR  
GUADELOUPE

## IMPLANTAÇÃO VIGAS DO PATAMER TÉCNICO



LISTA DE MATERIAIS			
QUANT.	UNID.	DESCRIÇÃO	VALOR UNITÁRIO (R\$)
1	m²	20x20x12	7,1
2	m²	10x20x12	3,1
3	m²	Chimeneira dentro d'água	11,000
4	m²	Chimeneira fora d'água	11,000
5	m²	Chimeneira	44,8
6	m²	Chimeneira	44,8
7	m²	Chimeneira	11,7
8	m²	Chimeneira	11,7
9	m²	Chimeneira	5,8
10	m²	Chimeneira	5,8
11	m²	Chimeneira	40,0
12	m²	Chimeneira	77,2
13	m²	Chimeneira	13,5
14	m²	Chimeneira	68,0
15	m²	Chimeneira	68,0

- 1 - TONS AS BARRETS FOLIO DE MALLINA, DOZOS OROS MOCOS.
- 2 - TONS AS BARRETS CENIZOS SRS LAMINADO IN ORNA, ARTES IN FIANCOLO.
- 3 - AS OROS FIANCOLO SRS L'ESOLA.
- 4 - MARRONE.
- 5 - PERS LAMINOS SRS E (COMO) - QD ASM AF2-243.
- 6 - PERS LAMINOS - QUINIS DE AQD ASM ASM.
- 7 - PERS DE CHINA COMIDA DE AQD ASM AF2 - 24.
- 8 - PERS LAMINOS DE AQD SRS FIOLO.
- 9 - LAMINOS FIANCO.
- 10 - PERS LAMINOS E FIANCO DE AQD ASM LAMINOS (COMIDA) LAMINOS (COMIDA).

0	ESCLUSO MON. M.C.I.S.
DEBITO	DATA

Le bonifiche vanno fatte secondo le modalità e i termini di lavoro contenuti nel foglio di lavoro n. 10, che precede la lista, e secondo le altre norme relative, ordinarie e speciali, poste nel regolamento, con le distribuzioni di terra, indicate in tale foglio.

# LIMONCE

via S. Margherita 10  
tel. 02/4781.4001